



Waste Composition Analysis

National Theatre - Enterprises
November 2023

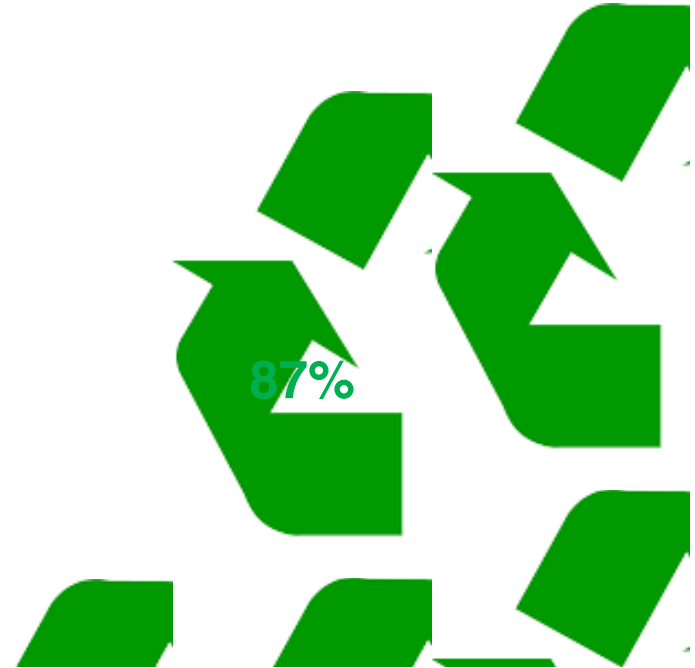
Recorra 

Audit Overview

The waste audit shows that the recycling rate could have been **87%** in October, if all your waste and recycling had been diverted through the correct recycling streams³.

Your General waste audit showed that only 27% of material present was general waste. The remaining 73% could have been recycled in some way.

Your Plastic, cans and plastic containers (PCPC) Audit showed that only 31% of material present was PCPC. The remaining 69% should be disposed of via alternative disposal routes.





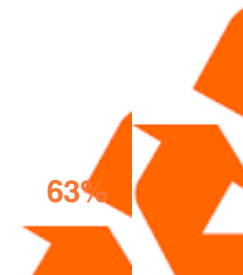
Introduction

On 30/11/2023, Recorra carried out an audit on the general waste and mixed recycling sacks from National Theatre - Enterprises

The audit aimed to identify and quantify what material is going into each stream. Then we can make recommendations so specific improvements can be made. This will lead to an increased recycling rate.

Current performance:

Reported¹ performance as of October:



Actual² performance based on composition audit:

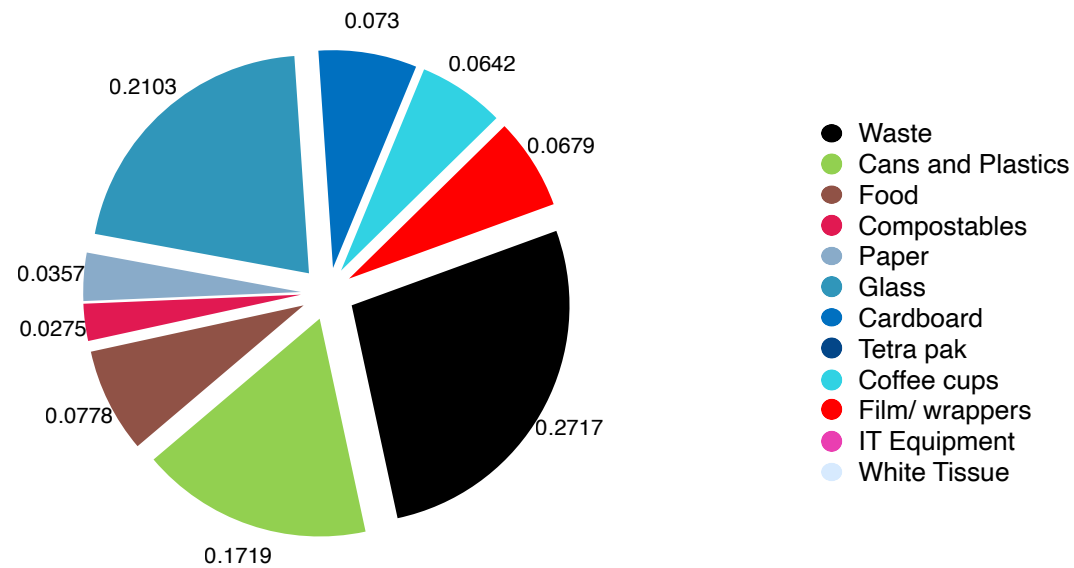
57%

Recorra

General waste

From this audit we can see that only 27% of the material found was actually general waste.

Material	Weight (kg)	% of sample
Waste	8.0	27%
Glass	6.2	21%
Cans and Plastics	5.1	17%
Food	2.3	8%
Cardboard	2.2	7%
Film/ wrappers	2.0	7%
Coffee cups	1.9	6%
Paper	1.1	4%
Compostables	0.8	3%
Tetra pak	0.0	0%
IT Equipment	0.0	0%
White Tissue	0.0	0%
Total	29	100%



General waste



Food Waste



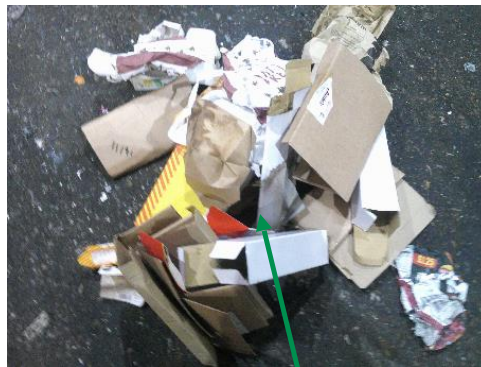
Glass



Coffee Cups



Cans



Cardboard

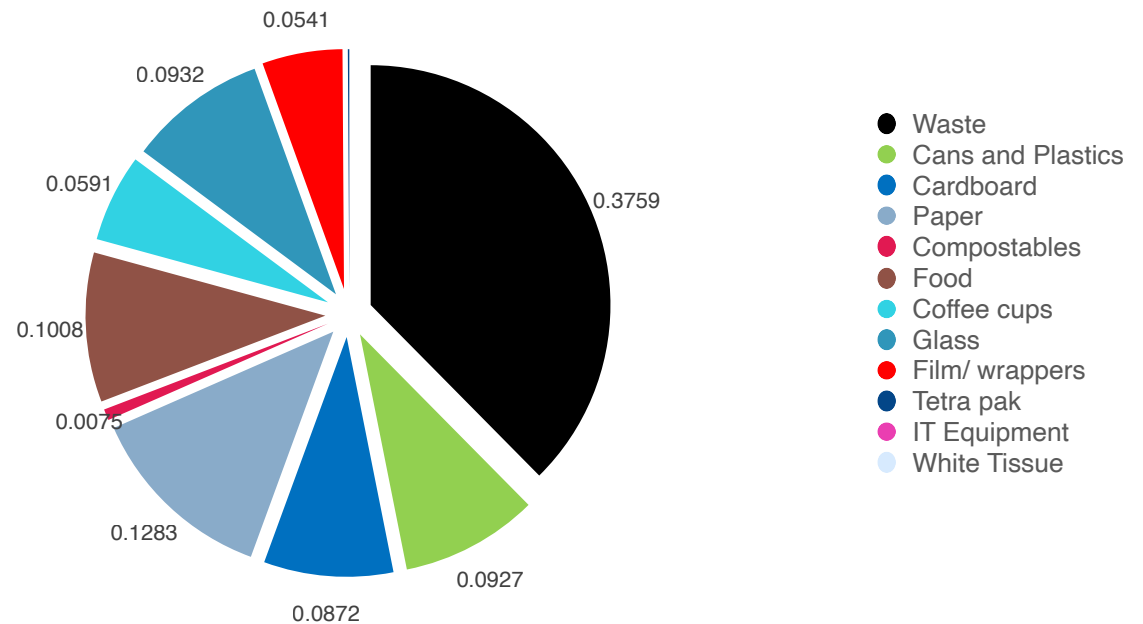


Plastics

Paper, Cans & Plastic Containers

From this audit we can see that only 31% of the material found was actually Paper, Cans & Plastic Containers (and Cardboard).

Material	Weight (kg)	% of sample
Waste	7.50	38%
Paper	2.56	13%
Food	2.01	10%
Glass	1.86	9%
Cans and Plastics	1.85	9%
Cardboard	1.74	9%
Coffee cups	1.18	6%
Film/ wrappers	1.08	5%
Compostables	0.15	1%
Tetra pak	0.02	0%
IT Equipment	0.00	0%
White Tissue	0.00	0%
Total	19.95	100%



Paper, Cans & Plastic Containers



Coffee Cups



General Waste



Compostables



Food



Glass



Recommendations

Improve food recycling

8% of the general waste sample and 10% of the mixed recycling sample audited was found to be food waste.

We would suggest launching a food separation scheme to all kitchens and restaurant areas to capture all of the waste food created by National Theatre - Enterprises staff.

Separating food waste is beneficial to the environment as it can be sent to an anaerobic digestion facility, where the food is broken down to produce biogas and fertiliser.



Recommendations

Educate staff

69% of the mixed recycling sample was incorrectly placed in this stream, alongside 73% of the general waste sample being incorrectly placed.

Based on the high level of material in the wrong bins, we would recommend undertaking activities to engage with staff.

National Theatre - Enterprises could also take advantage of engagement activities such as Lunch & Learns, workshops and revitalising Green Teams.



Recommendations

Improve coffee cup recycling

6% of your overall sample was made up of coffee cups. Coffee cups are made from virgin fibres, so it is important to capture as many as possible for recycling.

To capture coffee cups, they must be collected separately in their own stream and sent to a specialist recycling facility.

We recommend introducing a [coffee cup recycling stream](#) at site. Contact your Account Manager if you are interested in this service.



Recommendations

Introduce colour coding

A strong colour coded message from posters, tinted sacks, and bins will reduce the level of contamination and improve the quality of the recyclables.

All infrastructure relating to your recycling scheme should follow a colour system; we recommend lime green for mixed recycling, grey/black for general waste, and brown for food waste. This includes internal and external bins, signage, and sacks.



Recommendations

Improve a SustainABLE Box

Created to capture all your hard-to-recycle items, we'll give them a new life to the items often found at National Theatre - Enterprises, recycling them using our network of trusted and vetted service partners.

We have a growing list of items that can be recycled in a [SustainABLE Box](#), including crisp packets, coffee pods, snack wrappers, PPE, and plastic film.

Contact your Account Manager if you are interested in this service.

Recorra 



Recommendations

SustainABLE Procurement

For the first time, it is now incredibly easy to switch to more sustainable alternatives. Our team of experts have curated a selection of over 2,000 products based upon a criterion including: recycled content, ethical supply chains and environmental credentials.

Our [ecommerce site](#) has been reconfigured to show you these products first, to help improve your social and environmental footprint, whilst still giving you access to all the products you may ever need.

Recorra



Recommendations

Improve a Vegware compostables service

2% of the overall sample was identified as Vegware compostables.

With our new service, Vegware foodservice containers, cutlery and cups are transformed into quality compost in 7-weeks along with residue food that would not normally be recovered with conventional food waste collection systems

Recorra 



Recommendations

Improve a glass service

16% of the overall sample was identified as glass.

Glass is one of the simplest materials to recycle; there is no limit to the number of times a glass bottle can be sorted, crushed, melted and made back into a new bottle.

Glass collected is transported to a specialist facility, crushed and used to manufacture new glass bottles in the UK.

Methodology



The following took place on 30/11/2023:

The auditor randomly selected bags each from general waste and mixed recycling from the audit bins.

The auditor weighed the sacks, before segregating each waste stream found within the sacks accordingly.

Each stream was subsequently weighed individually in kilos and the data recorded.

Data on waste production was collated and results are presented in this document.

Notes

¹ This figure is what the recycling rate is at collection. This does not include any contamination that is sorted out at the Material Recovery Facility. This is based on either actual or estimated weights of the contents placed in the recycling bin.

² This figure is what the audit shows, considering the contamination found in the recycling. This does not include the recyclables found in the waste, as this would continue to be sent to an EfW facility and not recycled.

³ This figure assumes that 100% of the material placed in the card, food and glass streams is recyclable and free from contamination. This is your optimal recycling rate, based on the results of the waste audit, which have been extrapolated across the whole building.